

Features

- **Powered by the RADEON™ 9200 graphics processing unit (GPU)**
- **Supports DirectX® 8.1 and OpenGL® 1.3**
- **Supports 3D resolutions (32-bit color) up to 2048x1536**
- **SMARTSHADER™** technology
- **SMOOTHVISION™** technology
- **CHARISMA ENGINE™ II** technology
- **PIXEL TAPESTRY™ II** technology
- **VIDEO IMMERSION™ II** technology
- **Dual independent displays (DVI/CRT, DVI/TV, CRT/TV)**
- **Provides S-video connect or Composite connect (optional)**
- **Provides DVI (Digital Visual Interface) output port (optional)**
- **DVI-I-To-VGA Adapter (optional)**
- **HydraVision™ software (optional)**

ATI's graphics accelerator are the most advanced on the market today. They improve the performance of your system and display exceptional graphics.

Your ATI graphics accelerator comes complete with enhanced drivers and comprehensive award-winning software utilities designed to make you more productive. Please read this guide before attempting to install your card.

Preparing Your Computer

Turn off the power to your system and discharge your body's static electric charge by touching a grounded surface — e. g., the metal surface of the power supply — before performing any hardware procedure.

The manufacturer assumes no liability for any damage, caused directly or indirectly, by improper installation of any components by unauthorized service personnel. If you do not feel comfortable performing the installation, consult a qualified computer technician.

Damage to system components, the accelerator card, and injury to you may result if power is applied during installation.

If you are using an operating system other than Windows 98 or Windows Me, you may need to do the following before installing your card.

- If your current system configuration uses special drivers that are not 640x480 VGA, you may encounter conflicts with the card. We recommend that you first reconfigure your operating system to use a **VGA** driver supplied with your operating system before installing the card. For more information about changing your operating system configuration, see your operating system documentation.

Installing Your ATI Graphics Accelerator Card

- 1. Shutdown the system and turn off the PC.**
- 2. Open the computer and locate a free PCI slot.**
- 3. Remove the cover for that slot from the computer chassis.**
- 4. Place the ATI board into that slot and screw the board in.**
- 5. Replace the computer cover.**
- 6. Place the VGA monitor cable into the ATI Card.**

To install the ATI enhanced driver for Windows 98 or Windows Me

NOTE!

*When you restart your system following installation of your ATI card, Windows 98 and Windows Me detects the new hardware and may attempt to install a driver from its system registry. When prompted to “Restart the computer now”, select **NO**. Then follow the normal installation procedure below.*

Selecting ‘NO’ for the initial restart prompt is a necessary step since Windows may load an older display driver that is incompatible with your new graphics card. Always use the driver available on the ATI Installation CD-ROM, or an applicable driver update.

*All ATI Installation CD-ROMs include a complete set of display drivers and multimedia software. Use the **same** ATI Installation CD-ROM to install the ATI enhanced display driver.*

- 1.** Insert the ATI INSTALLATION CD-ROM into your CD-ROM drive.
- 2.** Click Start.
- 3.** Select Run.
- 4.** Type the following:
D:\ATISSETUP.EXE
(If **D** is not your CD-ROM drive, substitute **D** with the correct drive letter.)

- 5.** Follow the Wizard's on- screen instructions to complete the installation.

For correct resolution and refresh rate operation, you now need to select a display device. You may also want to change the color palette from 256 colors (the default) to a higher number of instructions, refer to colors. For ATI's online help file. Simply double-click the ATI icon on the taskbar to access the online help. For more information about using the ATI PLAYER, open the ATI PLAYER online help by clicking on the [?] in the upper- right corner of the PLAYER window.

To install the ATI enhanced driver for Windows 2000 or Windows XP

Note: Please uninstall any existing video drivers that could possibly create a conflict before attempting to install this VGA card.

1. Start Windows.
2. When Windows detects your ATI graphics card, the **Found New Hardware Wizard** dialog box appears.
3. Click **Cancel** to enter the Windows desktop.
4. Insert the CD installation disc into your CD-ROM drive.
5. Click **Start**.
6. Select **Run**.
7. Type the following:
D:\ATISSETUP.EXE
(If **D** is not your CD-ROM drive, substitute **D** with the correct drive letter.)
8. Follow the on-screen instructions to complete the installation.
9. When Setup has finished installing all the necessary files on your computer, it will prompt you to restart your computer. Click **Yes** and **Finish** to complete Setup and restart your computer.

To connect a TV or VCR to your computer

1. Determine if your TV or VCR has an S-Video or a Composite video connection.
2. Looking at the back of your computer, locate the corresponding video-out connector.
3. Using an S-video or a Composite cable, attach one end of the cable to the video-out connector on your computer and the other end to your TV or VCR.

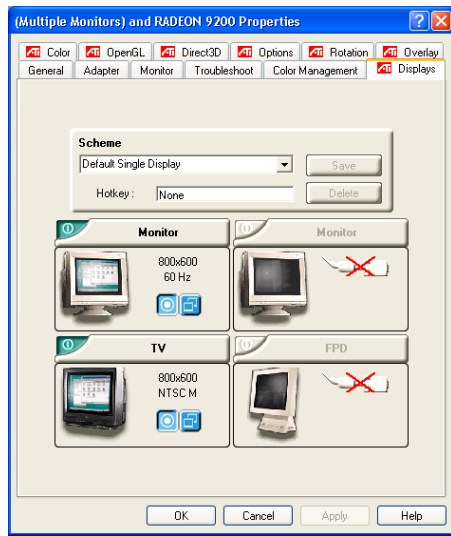
Using TV Display (TV-out function optional)

Your graphics accelerator is configured for TV display. Using this feature, you can connect a TV to your computer's video output to view the desktop.

If you are not using a TV for your computer's display, it is recommended that you disable TV display for optimal performance (higher refresh rates). You can re-enable TV display at a later date.

- For **NTSC**, 800x600x60Hz and 1024x768x60Hz(hidden)
- For **PAL**, 800x600x50Hz and 1024x768x50Hz(hidden)
- Low resolution modes but they are hidden and used by application programs and cannot be select end user.

1. Click the **Settings** tab to view the **Display Properties**.
2. Click the **Advanced** button.
3. Click the **Displays** tab.
If you are running an extended desktop, you must first select the video adapter whose display properties you want to change.
4. Click the **TV** button.
Your TV must be enabled before you can change its display properties.
5. Click the **Advanced** tab.
6. In the **Composite Sharpness** box, select a value from the list.
7. Click **OK** or **Apply** to save the changes you have made.



To change the display mode of a display device

Click the Primary/Secondary button for the display device whose display mode you want to change. The button label switches between "Primary" and "Secondary" to indicate the current display mode. Your display device must be enabled before you can change its display mode.

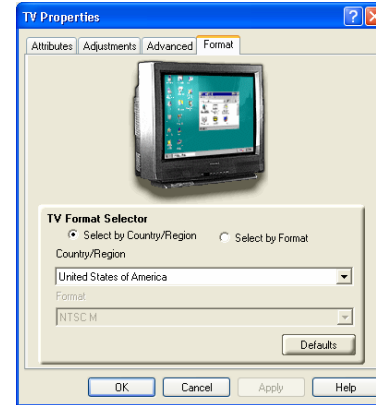
Notes:

- *At least one of your display devices must be enabled.*
- *At least one of your display devices must be set to the primary display mode.*

To select your TV broadcast format by country

1. Click the **Settings** tab to view the **Display Properties**.
2. Click the **Advanced** button.
3. Click the **Displays** tab.
If you are running an extended desktop, you must first select the video adapter whose display properties you want to change.
4. Click the **TV** button.
Your TV must be enabled before you can change its display properties.
5. Click the **Format** tab.
6. In the **Country** box, select a country from the list.
7. Click **OK** or **Apply** to save the changes you have made.

Note: In general, there is only one broadcast format supported by a given country.



To select your TV broadcast format directly

1. Click the **Settings** tab to view the **Display Properties**.
2. Click the **Advanced** button.
3. Click the **Displays** tab.
If you are running an extended desktop, you must first select the video adapter whose display properties you want to change.
4. Click the **TV** button.
Your TV must be enabled before you can change its display properties.
5. Click the **Format** tab.
6. In the **Format** box, select a broadcast format from the list.

7. Click **OK** or **Apply** to save the changes you have made and exit to the Displays page.
8. Click **Close**.
9. Click **Yes** to restart your computer.

Multiple Display Support in Windows 98

Windows 98 provides support for using more than one display device at a time – you simply install a separate AGP graphics card for each additional display you intend to use. With multiple displays, you can expand your desktop, run different programs on separate displays, even play some newer games with multiple views. And each display can have a different resolution and color depth.

Note that, under Windows 98, one graphics card is automatically designated by the system as the **primary** graphics card. Each additional graphics card is designated by the system as a **secondary** graphics card. Certain 3D and multimedia features are only available on the **primary** graphics card.

If you are installing more than one graphics card, you need to consider the following:

- If you install both a PCI and an AGP graphics card in the same system, the AGP graphics card will become the secondary graphics card.
- If you install two or more PCI graphics cards in the same system, the primary graphics card is typically the one installed in the PCI slot with the *lowest* number. This is typically the PCI slot *furthest* from the computer's ISA slots. Consult your computer system manual for help in selecting a slot.

Deutsch

So installieren Sie die erweiterten ATI Treiber für Windows® 95/98 oder Windows® Me

1. Legen Sie die ATI INSTALLATIONS-CD-ROM in Ihr CD-ROM-Laufwerk.
2. Klicken Sie auf Start.
3. Wählen Sie Ausführen.
4. Geben Sie die folgende Zeile ein:
D:\ATISSETUP.EXE
(Falls Ihr CD-ROM-Laufwerk nicht den Buchstaben „D“ trägt, ersetzen Sie „D“ durch den richtigen Laufwerksbuchstaben.)
5. Folgen Sie den Instruktionen des Installationsassistenten um die Installation zu beenden.

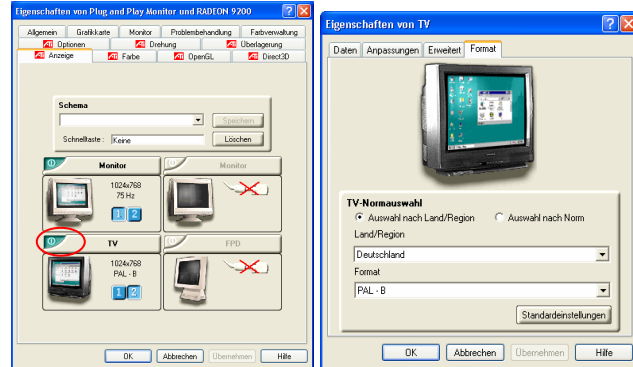
So installieren Sie den erweiterten ATI-Treiber für Windows® 2000 oder Windows® XP

1. Starten Sie Windows.
2. Sobald Windows 2000 Ihre Grafikkarte gefunden hat, erscheint eine Dialogbox mit dem Hinweis **Neue Hardware gefunden**.
3. Klicken Sie auf Abbrechen um die Windows Arbeitsoberfläche aufzurufen.
4. Legen Sie die CD-Installations-CD-ROM in Ihr CD-ROM-Laufwerk ein.
5. Klicken Sie auf Start.
6. Wählen Sie "Ausführen".
7. Geben Sie die folgende Befehlszeile ein:
D:\ATISSETUP.EXE
(Falls **D** nicht ihr CD-ROM Laufwerk ist, ersetzen Sie **D** durch den korrekten Laufwerk-Buchstaben.)
8. Klicken Sie auf "**ATI Einfache Installation**" um den Installationsassistenten aufzurufen.
9. Daraufhin erscheint die Dialogbox der Lizenzvereinbarung. Wählen Sie den "**Ja**" Schalter.
10. Die Dialogbox "Digitale Signatur nicht gefunden" erscheint. Klicken Sie auf den "**Ja**" Button.
11. Folgen Sie den Anweisungen auf Ihrem Bildschirm um die Installation abzuschließen.

So stellen Sie das richtige TV-Rundfunkformat Ihres Landes ein(Die TV-Out Funktion ist optional)

- Für **NTSC**, 800x600x60Hz and 1024x768x60Hz (verborgen)
- Für **PAL**, 800x600x50Hz and 1024x768x50Hz (verborgen)
- Die geringen Auflösungsmodi sind verborgen, werden von den Anwendungsprogrammen verwendet und können nicht vom Benutzer eingestellt werden..

1. Klicken Sie hier um die Bildschirm-Einstellungen auf der Karte zu sehen.
2. Klicken Sie auf den **“Erweitert”** Button.
3. Klicken Sie auf die Registerkarte **ATI-Anzeige**.
Falls Sie einen weiteren Desktop verwenden, müssen Sie zuerst den Video-Adapter auswählen dessen Bildschirmeinstellungen Sie ändern wollen.
4. Klicken Sie auf den **TV**-Button.
Ihr TV muss ausgewählt sein, bevor Sie die dessen Bildschirmeinstellungen ändern können.
5. Klicken Sie auf die **Format**-Karte.
6. Selektieren Sie in der **Länderbox** ein Land aus der Liste.
7. Klicken Sie auf **OK** oder **Übernehmen**, um die Änderungen, die Sie vorgenommen haben, zu speichern.



Wichtig: Jedes Land unterstützt nur ein einzelnes Rundfunkformat.

Français

Pour installer les pilotes étendus d'ATI pour Windows® 98 ou Windows® Millennium Edition

1. Insérez le CD-ROM INSTALLATIOND'ATI dans votre lecteur de CD-ROM.
Si Windows® exécute automatiquement le CD-ROM, passez à l'étape 6.
2. Cliquez sur **Démarrer**.
3. Choisissez **Exécuter**.
4. Tapez l'instruction suivante :
D:\ATISSETUP.EXE
(Si **D** n'est pas la lettre de votre lecteur de CD-ROM, remplacez **D** par la lettre du lecteur.)
5. Cliquez sur **OK**.
6. Cliquez sur **Suivant**.
7. Cliquez sur **Oui**.
8. Suivez les instructions apparaissant à l'écran de l'Assistant pour compléter l'installation.

*Il est recommandé de choisir l'option d'installation **Express**. Si votre carte ATI Series comprend un composant multimédia, cette option installera automatiquement le logiciel de ce composant, avec les pilotes étendus d'ATI.*

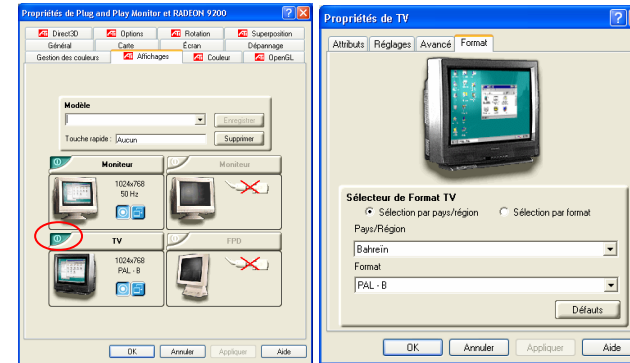
Pour installer les pilotes étendus d'ATI pour Windows® 2000 ou Windows® XP

1. Insérez le CD-ROM INSTALLATIOND'ATI dans votre lecteur de CD-ROM.
Si Windows® exécute le CD-ROM automatiquement, passez à l'étape 6.
2. Cliquez sur **Démarrer**.
3. Choisissez **Exécuter**.
4. Tapez l'instruction suivante :
D:\ATISSETUP.EXE
(Si **D** n'est pas la lettre de votre lecteur de CD-ROM, remplacez **D** par la lettre du lecteur.)
5. Cliquez sur **OK**.
6. Suivez les instructions apparaissant à l'écran de l'Assistant pour compléter l'installation.

Utilisation et réglage de TV Out

Pour activer ou désactiver l'affichage du téléviseur

1. Démarrez Windows®.
2. Cliquez sur **Démarrer**.
3. Pointez sur **Paramètres**, puis cliquez sur **Panneau de configuration**.
4. Cliquez deux fois sur **Affichage**.
5. Cliquez sur l'onglet **Affichages d'ATI**.
*Les utilisateurs de Windows® 98 cliquent sur le bouton **Avancé...** puis sur l'onglet **Affichages d'ATI**.*
6. Cliquez sur le bouton vert **activer/désactiver** à côté du sigle "TV" pour activer/désactiver l'affichage TV.
7. Cliquez sur **OK** ou sur **Appliquer** pour enregistrer les modifications apportées.



Español

Instalación de controlador ATI en Windows® 98/ Windows® Me/ Windows® 2000/ Windows® XP

1. Introduzca el CD-ROM INSTALACIÓN DE ATI en la unidad de CD-ROM.
Si Windows® ejecuta automáticamente el CD-ROM, vaya al paso 6.
2. Haga clic en **Inicio**.
3. Seleccione **Ejecutar**.
4. Digite lo siguiente:
D:\ATISSETUP.EXE
*(Si **D** no corresponde a la unidad CD-ROM de su computadora, sustituya **D** por la letra correcta de la unidad.)*
5. Haga clic en **Aceptar**.
6. Haga clic en **Instalación simple ATI** para iniciar el Asistente de Instalación.
7. Siga las instrucciones en pantalla del Asistente para llevar a cabo la instalación.

Para seleccionar directamente el formato de emisión de TV

1. Haga clic aquí para ver Propiedades de pantalla en la ficha **Configuración**.
2. Haga clic en el botón **Avanzada**.
3. Haga clic en la ficha **Pantallas**.
Si utiliza un escritorio ampliado, primero debe seleccionar el adaptador de pantalla cuyas propiedades de pantalla desea cambiar.
4. Haga clic en el botón **TV**.
El televisor ha de estar activado antes de cambiar las propiedades de pantalla.
5. Haga clic en la ficha **Formato**.
6. En el cuadro Formato, seleccione un formato de emisión en la lista.
7. Haga clic en **Aceptar** o **Aplicar** para guardar los cambios que haya introducido y salir de la página Pantallas.
8. Haga clic en **Cerrar**.
9. Haga clic en **Sí** para reiniciar el sistema.

安裝 Windows 98/Me 驅動程式


1. 啟動 Windows 系統。
2. 隨後“找到新的硬體”對話盒會出現。請依螢幕指示進行。
3. “更新裝置驅動程式精靈”視窗的出現，這個精靈會安裝 Standard PCI Graphics Adapter(VGA)驅動程式，請按下【下一步】鍵。
4. 接下來，請在這個畫面中按下【完成】鍵開始安裝顯示卡驅動程式，請告訴程式到 Windows 98/Me 底下的 System 子目錄中尋找驅動程來安裝。
5. 此階段完成後，“變更系統設定值”對話盒最後會出現請按【是】回答下列問題“現在想重新啟動電腦？”。
6. 將顯示卡驅動程式光碟片放入光碟機中。
7. 安裝程式應該自動啟動。(如果安裝程式沒有啟動，請瀏覽到 CD-ROM，然後按一下 ATIS SETUP 圖示。
8. 按一下【ATI 簡易安裝】來啟動安裝精靈。
9. 請依螢幕指示安裝直到安裝完成。
10. 驅動程式安裝完畢後，會出現“安裝完成”對話方塊，選取【是,我現在要重新啟動我的電腦】選項，再按下【完成】鍵。

安裝 Windows 2000/XP 驅動程式

1. 啟動 Windows 系統。
2. 當 Windows 偵測到系統中顯示卡時，會出現“尋找新增硬體精靈”對話盒在螢幕上。
3. 請按下【取消】鍵，並回到桌面。
4. 將顯示卡驅動程式光碟片放入光碟機中。
5. 安裝程式應該自動啟動。(如果安裝程式沒有啟動，請瀏覽到 CD-ROM，然後按一下 ATIS SETUP 圖示。

6. 按一下【ATI 簡易安裝】來啟動安裝精靈。
7. 請依螢幕指示安裝直到安裝完成。
8. 驅動程式安裝完畢後，會出現“安裝完成”對話方塊，選取【是,我現在要重新啟動我的電腦】選項，再按下【完成】鍵。

使用 TV-Out 功能

1. 由於 TV-Out 是選購，請確認顯示卡是否有此功能。
2. 將電視接線和顯示卡接上，並打開電視機電源。
3. 啟動您的電腦，並確定所安裝的顯示卡驅動程式能正常執行。
4. 安裝完成後。在 Widows 系統空白桌面，按滑鼠右鍵，選取【內容】，出現【顯示器內容】，選取【設定】標籤頁，按下【進階...】按鈕，選取【顯示】標籤頁。
5. 按一下電視選項的來啟動電視。
6. 按一下【確定】或【套用】來儲存您所做的變更。

注意：

1. 您一定要先啟動電視才能變更其顯示器內容。
2. 當您要切換電視輸出時，請將螢幕解析度調整為 800x600x60Hz 或 640x480x60Hz 否則將無法成功地切換至電視輸出。

依照國家選擇電視的 TV 格式

1. 按一下【電視】按鈕。
(您一定要先啟動電視才能變更其顯示器內容)
2. 按一下【格式】字標。
3. 在“國家”方塊中，從清單中選擇一個國家。
4. 按一下【確定】或【套用】來儲存您所做的變更。



RADEON 9200

Quick Installation Guide Installation Handbuch Installation Guide de l'Utilisateur Instalación Guía del Usuario 快速安裝指南

741-092P001010
REVISION: B
20-Oct -2003